



Connections: The Blackfeet and Winold Reiss



The artwork presented in this exhibition showcase connections between Blackfeet people and German American modernist artist Winold Reiss (1886-1953). Some individuals and families from the Blackfeet Nation formed decades-long relationships with Reiss during his many visits to Blackfoot Territory from New York between 1920 and 1948. This exhibition puts nine of Reiss's original pastel portraits into conversation with the art and belongings of Blackfeet people from the collection of the Museum of the Plains Indian.

Many Blackfeet people worked for Reiss as portrait models. The most recognizable portraits are those that the Great Northern Railway Company purchased from Reiss and reproduced in advertisements for its resorts and tour operations in Glacier National Park. These portraits connect us with Blackfeet individuals who grappled with the imposition of the tourism industry on their traditional territory in the early twentieth century. As iconic images, they circulated widely in North America and internationally. This exhibition reconnects the portraits with their community and families.

Curated by Renee Bear Medicine and Heather Caverhill, this exhibition was made possible through a partnership between Blackfeet Nation, Glacier National Park Conservancy, Burlington Northern and Santa Fe Railway Foundation, and the Museum of the Plains Indian. The Burlington Northern and Santa Fe Railway Foundation generously loaned most of the portraits in this exhibition to the Museum of the Plains Indian.

The Museum of the Plains Indian is managed by the U.S. Department of the Interior, Indian Arts and Crafts Board. For admission fees and hours of operation please visit www.doi.gov/iacb/museum-plains-indian or call (406) 338-2230

Connections: The Blackfeet and Winold Reiss

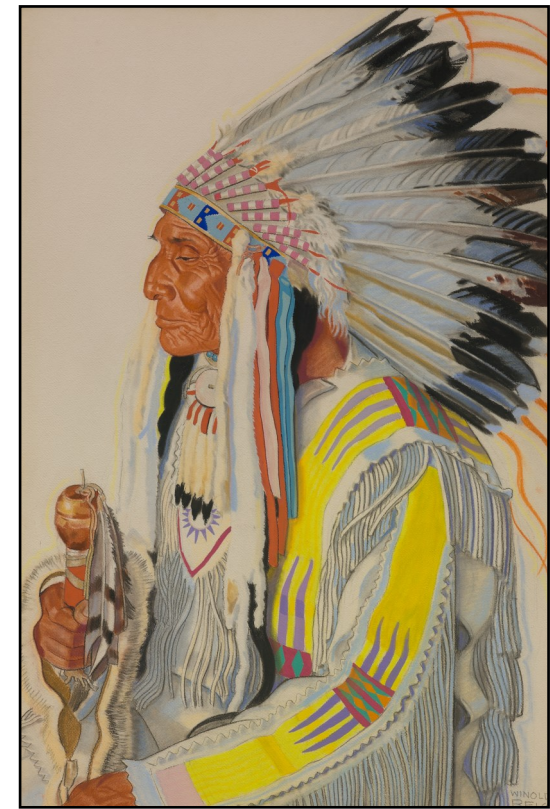


Turtle
Winold Reiss
1943

Pastel on Whatman board
Image courtesy of BNSF Railway Foundation



Julia Wades in the Water
Winold Reiss
1943
Pastel on Whatman board
Image courtesy of BNSF
Railway Foundation



Chief Wades in the Water
1943
Winold Reiss
Pastel on Whatman board
Image courtesy of BNSF
Railway Foundation



Kills Instead
1943
Winold Reiss
Pastel on Whatman board
Image courtesy of BNSF
Railway Foundation



Weasel Tail
1943
Winold Reiss
Pastel on Whatman board
Image courtesy of BNSF
Railway Foundation